

We are bringing the
HEARTBEAT of Dubai HOME

Ecovillage

—airpark residences—

Buy Luxurious Hotel Apartment
Studio, 1, 2, 3 Bedroom


Abuja Airport

Owning Hotel Apartment
...in the Abuja Airport

You own it! We manage it!

A fly-in community . Living at the Airport

ABOUT

Ecovillage Airpark Residence is a Fly-In Community, that is intentionally and specifically designed at the Nnamdi Azikiwe International Airport Abuja, to provide accommodation for airline crews and passengers, friends and family, individuals and organizations, and office spaces for all forms of operations and conveniences in the airport.

This unique holistic Fly-In Community is reserved for those who seek real estate investment with exceptional facilities and amenities.

Hotel Apartment Investments - The Real Deal!

Ecovillage Airpark Residences is offering investment in hotel apartments that can provide you with a steady passive income as well as an exit strategy that can result in a one-time profit when you decide to sell up.

As an investor, all you need to do is write the cheque and then sit back and collect your assured returns as everything is fully-managed on your behalf. As an owner, you can enjoy consistent rental income along with the lump-sum profit on exit without having to do any work at all. This is truly hands-free investment.

Owning a hotel apartment is a great way to maintain and grow your initial lump sum while generating a regular earnings improving the health of your finances through fully-managed, serviced real estate. The average yield of this investment opportunity is around 10% or more annually as it makes excellent investment portfolio.

We have ownership investment spread into three categories, namely;

1. Individual Ownership
2. Corporate Ownership, and
3. Group or Association Ownership

THE PROJECT

Invest In Our
**Owner-Occupied
(Residences)**



**Not Owner-Occupied
(Hotel Apartments)**

A STRATEGIC
LOCATION TO OWN
FULLY FURNISHED
AND SERVICED
SHORT-LET LUXURY
STUDIO,
1, 2, 3 BEDROOM
APARTMENTS,
VILLAS, AND OFFICE
SPACES



Bill Clinton Drive, Opposite the Presidential Wing, Nnamdi Azikiwe International Airport, Abuja.







Nnamdi Azikiwe International Airport

Nnamdi Azikiwe International

Presidential Air Fleet (PAF)

Customs FC Command

AA Rano Filling Station

Bill Clinton Drive

Nigerian Air Force Base

Nigerian Air Force Officers Mess

Nigerian Correctional Service Headquarter

Bill Clinton Dr

Immigration Headquarter



Ecovillage

airpark residences



NOT OWNER-OCCUPIED (HOTEL APARTMENTS)

...means the property owner does not occupy the property as their personal residence.

The Hotel Apartments are seated in the Condominium and Block of Apartments.



☒ 114 Studio, 1,2,3 Bedroom Apartment and 51 Terraces

HOW MUCH CAN
YOU MAKE FROM
HOTEL APARTMENT
8-10%
ANNUALLY OF THE
PURCHASED PRICE

*We are bringing the
HEARTBEAT of Dubai HOME*



CONDOMINIUM (VERTICAL CITY)



Find everything you need

Mixed Studio, 1, 2, 3 Bedroom Apartments, Commercial Lobbies and other Amenities



CONDOMINIUM (VERTICAL CITY)



Get closer to nature

Mixed Studio, 1, 2, 3 Bedroom Apartments, Commercial Lobbies and other Amenities



CONDOMINIUM (VERTICAL CITY)



Here, life is in the details

Mixed Studio, 1, 2, 3 Bedroom Apartments, Commercial Lobbies and other Amenities



CONDOMINIUM - (BASEMENT)



For the ones who matter most

Mixed Studio, 1, 2, 3 Bedroom Apartments, Commercial Lobbies and other Amenities



BLOCK OF APARTMENTS (HISTORY SUPREME)



Here, life is yours for the taking

1 Bedroom Apartments with Common Rooms and Reception



BLOCK OF APARTMENTS (HISTORY SUPREME)



Here, life takes you higher

1 Bedroom Apartments with Common Rooms and Reception



BLOCK OF APARTMENTS - HISTORY SUPREME (BACK VIEW)



Just around the corner

1 Bedroom Apartments with Common Rooms and Reception



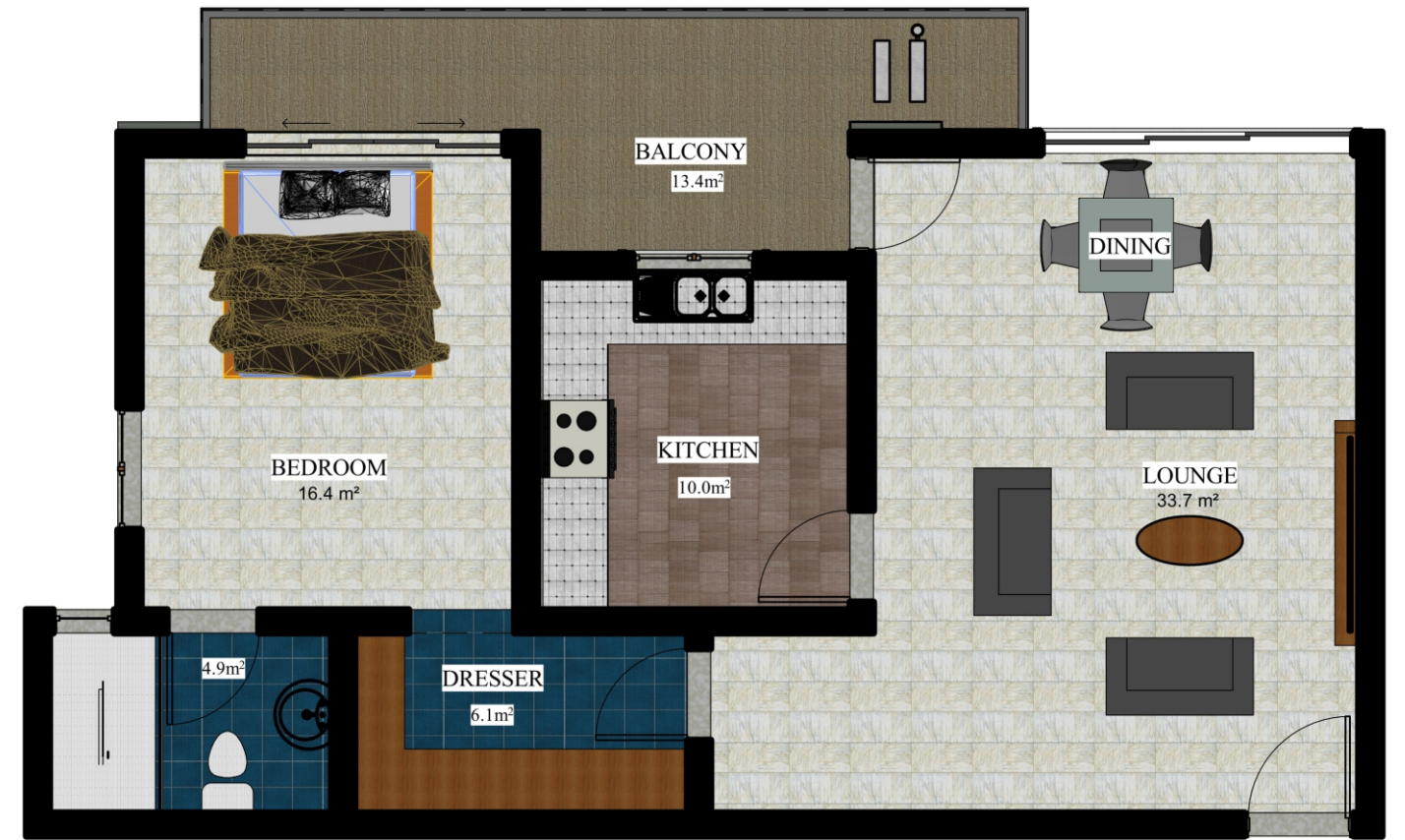
STUDIO (VERTICAL CITY)

59.7sqm



1 BEDROOM (HISTORY SUPREME)

96.1sqm



1BEDROOM (VERTICAL CITY)

86.4sqm



2BEDROOM (VERTICAL CITY)

183.3sqm



3 BEDROOM (VERTICAL CITY)

230.9sqm



Bathroom, Kitchen, Quality & Design by

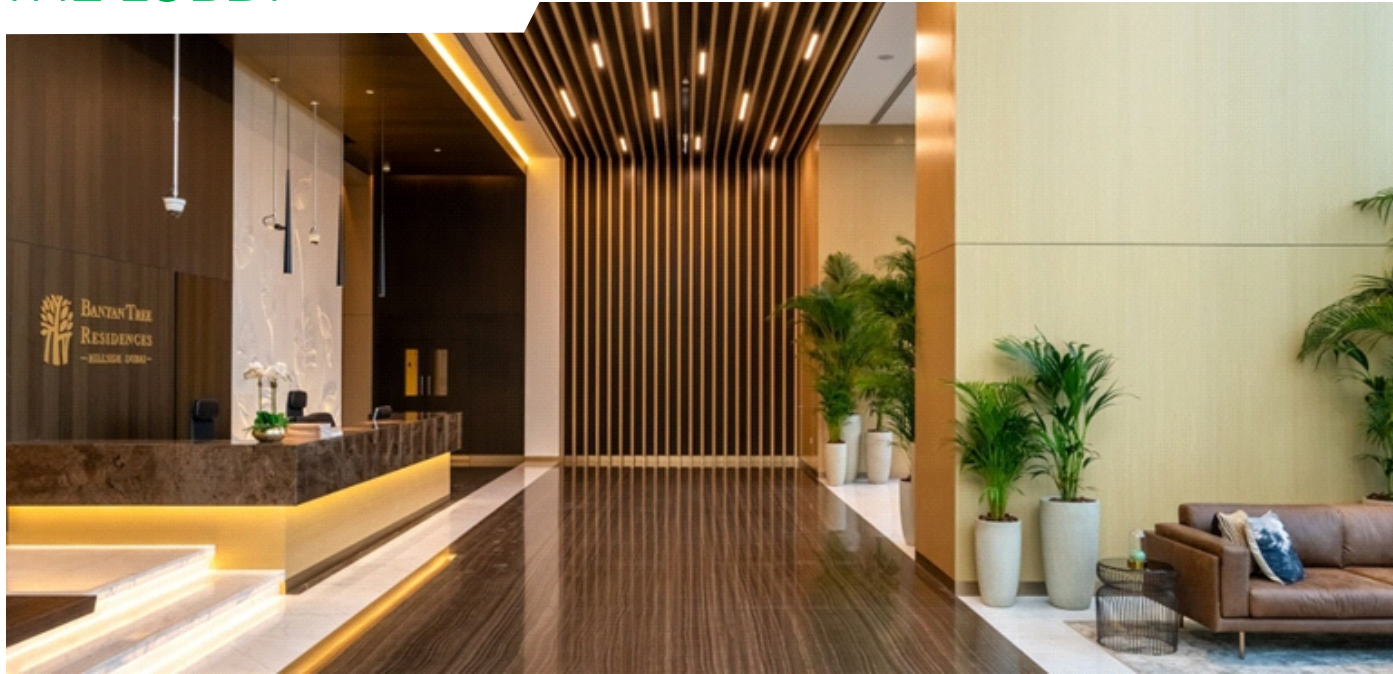


- ☑ Taps & Mixers
- ☑ Showers
- ☑ Shower Cabins
- ☑ Bathtubs
- ☑ Washbasin
- ☑ Toilet
- ☑ Furniture
- ☑ Accessories
- ☑ Installations
- ☑ Cleaning

When it come to the finer details, no stone has been left unturned to craft uniquely designed homes that are true dream spaces. Every room in every home reflects a superior level of quality and attention to details. From the smart layouts to the finest kitchens and sublime finishes, here architecture is designed from the inside out.

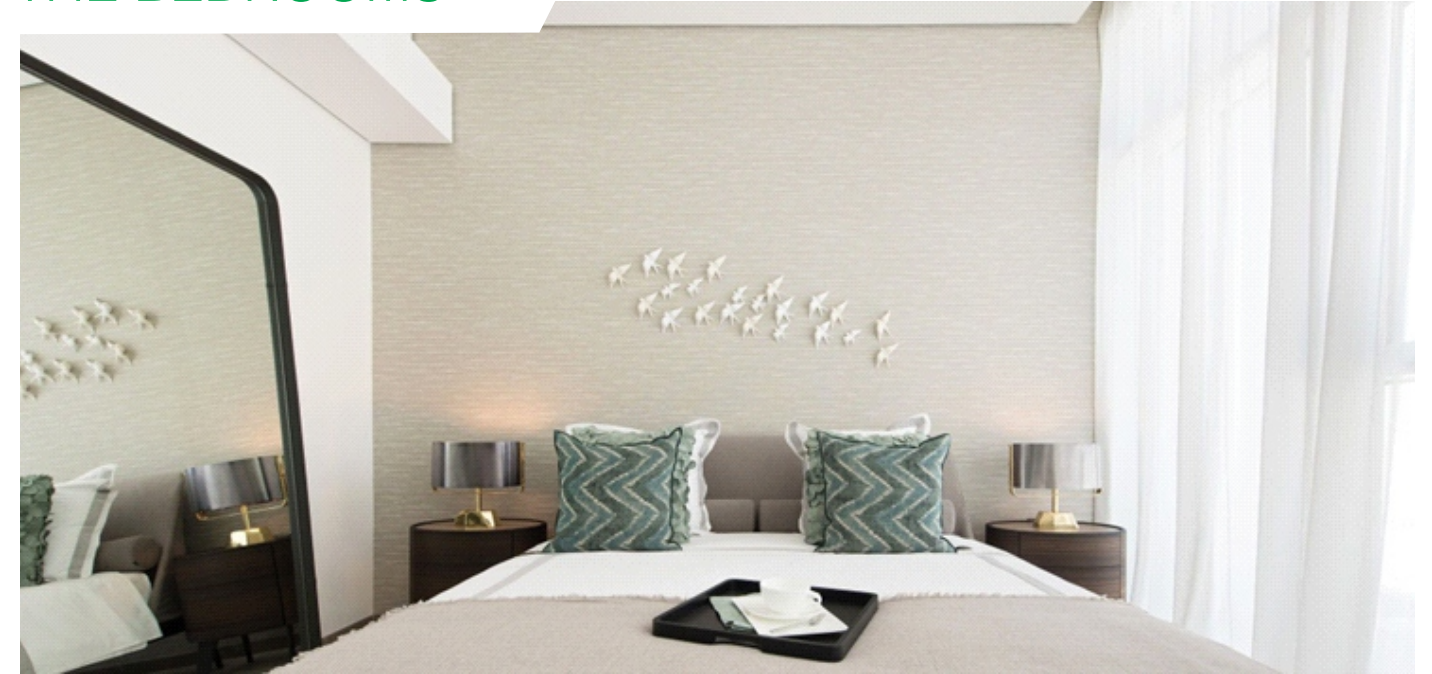


THE LOBBY



Enter the residences through a triple height hotel-style lobby lounge, offering impressive grand proportions and a dedicated concierge service to provide ECOVILLAGE'S

THE BEDROOMS



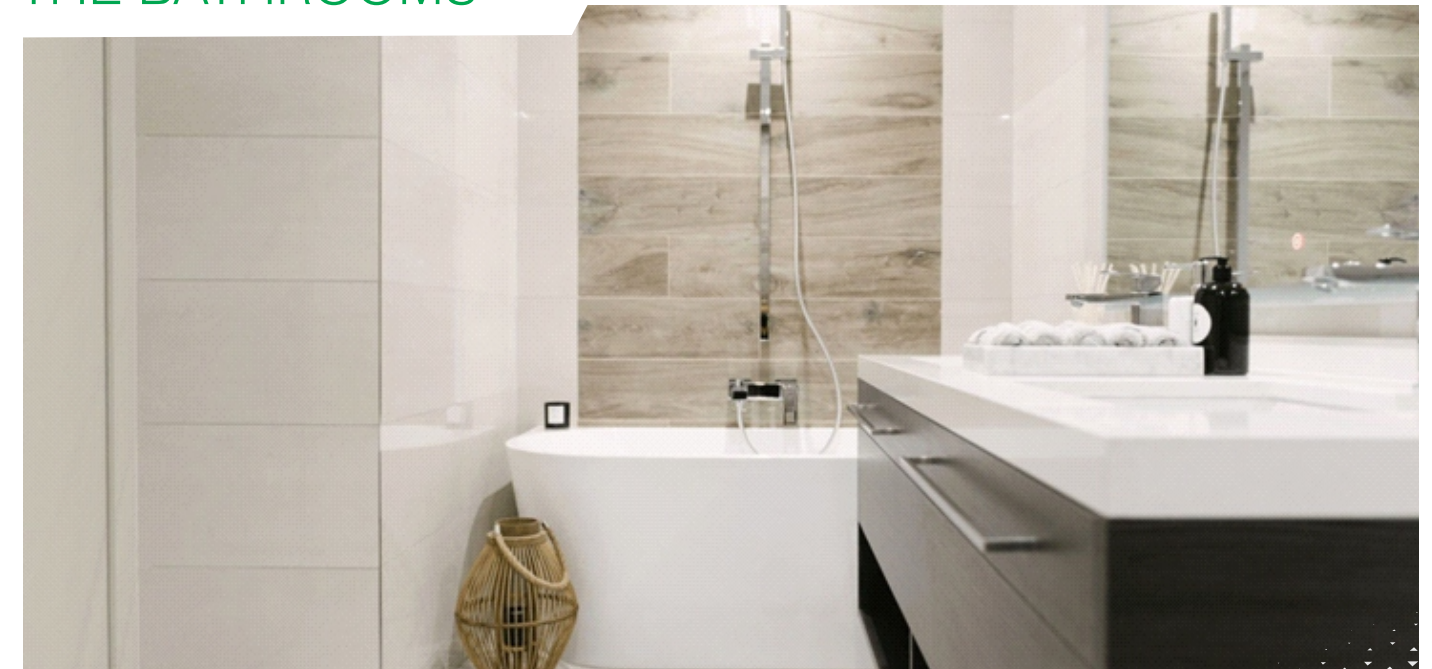
Every bedroom features an en-suite bathroom, ample wardrobe space and operatable window. With 3 meters of clear ceiling height you can enjoy the magnificent views through the floor-to-ceiling and wall-to-wall windows.

LIVING SPACES



Step into a harmonious combination of aesthetics and elegance. The wall-to-wall and floor-to-ceiling windows flood the residences with natural light, creating an extraordinary atmosphere within the 3.2 meters of clear ceiling height.

THE BATHROOMS



Careful craftsmanship is evident across the entire residences; from the kitchens to living rooms, and bedrooms to bathrooms. From layouts to fixtures, the utmost care and know-how has been invested to build a modern urban experience with Sophistication at the heart of every decision.



OWNER-OCCUPIED RESIDENCES

...means the owner occupy the property as their personal residence

Bathroom, Kitchen Fully Fitted and Serviced



OWNER OCCUPIED (4 BEDROOM + MAID'S ROOM TERRACE)



OWNER OCCUPIED (4 BEDROOM + MAID'S ROOM TERRACE)



THE VILLAS (TERRACE PLANS)

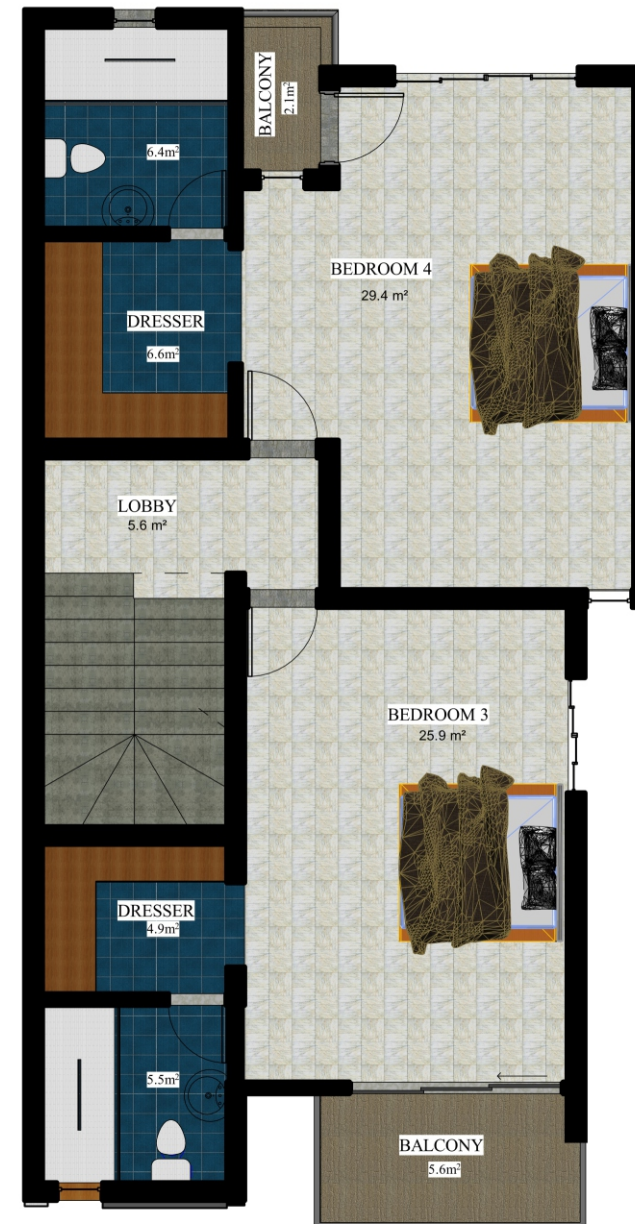
4 BEDROOM + Maid's Room



GROUND FLOOR



FIRST FLOOR



SECOND FLOOR

- 4 Bedroom + Maid's Room
- All rooms ensuite with 3 Large windows each and Balcony
- 2 Large Sitting Room and Ante-Room
- Total Floor plan 345.4sqm
- 3.5 Meter Ceilings/Headroom & POP
- Fully Fitted Kitchens with Microwave Oven, Burner and Oven
- Air Conditioners Installed 10 per Terrace
- 24 hour Fully Automated Metered Power
- Fibre Optic Internet & Cable/DSTV in All Units wired for
- CCTV Surveillance in Common Areas
- Ample Sockets in every room
- PPR Pipes and PPR Spares in our plumbing
- Quality Tiles and Bathroom Fittings
- All Doors, Internal & Security Doors with "Multilocks"
- All Aluminum Windows & Sliding Doors
- All bathroom fittings, WC, Sinks, + Water Heaters
- All Kitchen Cabinets and Granite Counter Tops
- All Kitchen Sinks and Taps
- All Floor and Wall Tiles
- All Cables (Coleman), Switches & Sockets (Schneider), DB, Fuses, etc
- Spotlights and lighting fixtures
- Railings for Staircase & Balconies
- Water Tower



RANKED AMONG THE SAFEST LOCATION IN ABUJA



TOURIST HOTSPOT



INTENTIONAL SOCIETY



OPEN AND FREE SYSTEM



STRATEGIC LOCATION



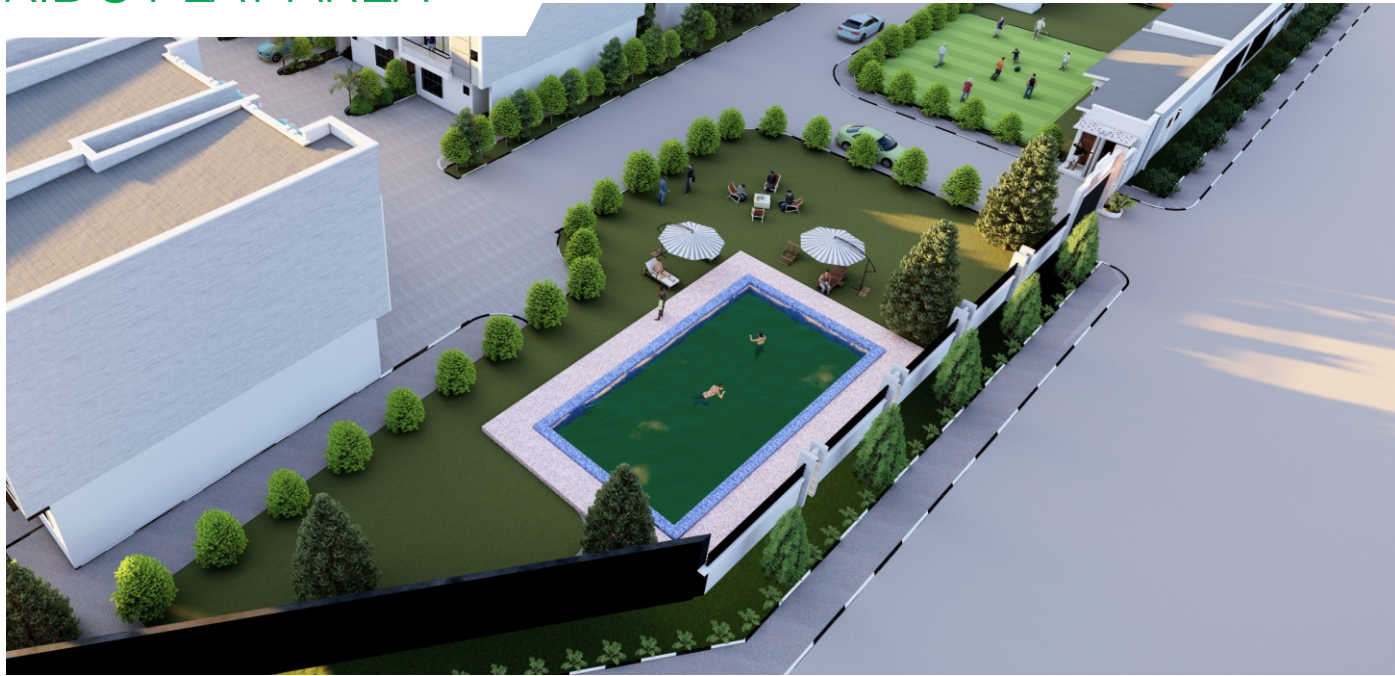
WORLD-CLASS INFRASTRUCTURE



"Flying is everything - it's the ultimate to have your globe at your beck and call and the runway in your backyard. It's a dream."



KID'S PLAY AREA



"Adventure Zone" is an outdoor play area, equipped with a climbing wall, a sandbox and other fun games to be enjoyed by the little ones.

AMONG 10,000 PLANTS AND TREES



Discover the true beauty of this urban oasis with lush gardens and a splendid pond that capture the refreshing side of nature. These scenic lush landscapes are ideal for family picnics, yoga, meditation or just a walk in this tranquil atmosphere.

AIRPARK RESIDENCES INTERIOR & EXTERIOR SPECIFICATIONS

Uncover an oasis of serenity at the heart of a fast-paced Airport City. A place where the comfort of luxury meets the simplicity of nature. The hotel-style lobby lounge featuring a triple-height ceiling sets the tone for the 7 Star Hotel experience. Discover features that include far-reaching green spaces, a resort-style infinity pool and the Clubhouse & Spa.

Interior

- Wall-to-wall and ceiling-to-ceiling windows
- Wifi
- Air conditioning
- Fully marbled flooring and bathrooms
- Permalite glazing
- Deante sanitary fittings
- High-pressure showers
- Deante kitchen appliances
- Subzero refrigeration and wine coolers
- Fully integrated wardrobes
- BMS control system on all mechanical services
- Prime power generators with 100% backup
- High-speed elevators
- Multi-thermostat, VRV air conditioning
- Fibre-internet ready

Architectural

- Tallest residential building within the Airport
- Sound and shatter proof glazing
- Waiting Area
- Reception
- Lift (Elevator)
- Basement Parking

Amenities

- Office Space
- Clinic
- Pharmacy
- Supermarket
- Restaurant and Poolside Cafe
- Crèche
- Hall
- Spa
- Laundry
- Tennis court
- Basketball court
- Volley Ball
- Squash court
- Swimming pool - 31 meter and kid's swimming pool
- Fully equipped gym
- Private car parking
- Residents' Clubhouse and Cinema
- Internal Asphalt Roads with Street Lights.
- Decorative Main Gate with Compound Wall
- 24hr concierge and maintenance services
- Landscaped surroundings with Kid's Play Area

Security

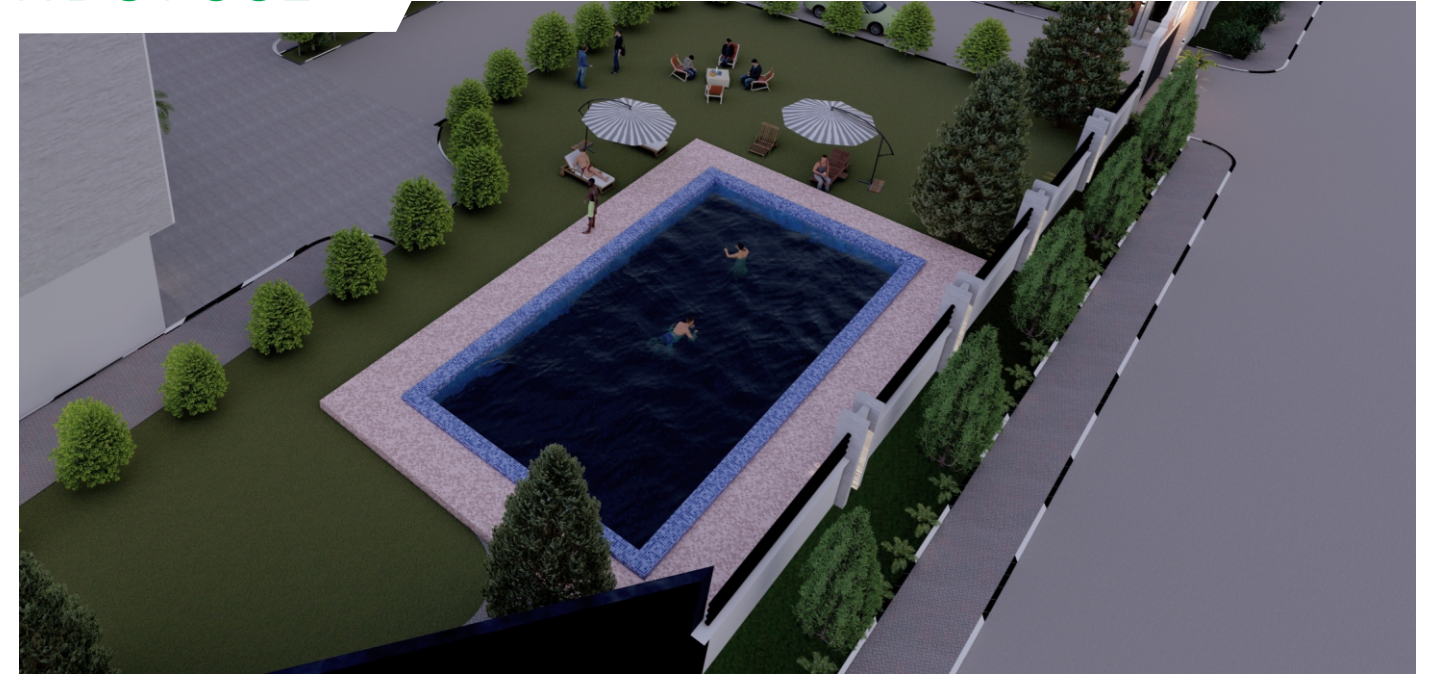
- Advanced CCTV security
- Controlled Card Access in all areas

FITNESS CENTRE



De-stress at the world-class fitness centre with state-of-the-art equipment, or try a friendly squash match on the court.

KID'S POOL



Children at the ECOVILLAGE Airpark Residences will have their own dedicated swimming pool, ideal for keeping them cool.

INFINITY POOL



Indulge in a resort-standard 31-metre infinity pool and sunbathe in the shallow water deck while you read, relax or socialize.

SIGNATURE PENTHOUSES



The penthouses offer some of the most spectacular living spaces available in Abuja. Each boasting a private built-in cantilevered infinity pool and expensive open-air entertainment terrace. Occupying a complete floor, the 4.2-meter floor-to-ceiling height ensures a spectacular 360-degree view across the two wings of the Nnamdi Azikiwe International Airport. A whole new meaning to the concept of luxury

OUR PROJECTS

Ecovillage
APARTMENTS
(Intentional Community)



KADO
**VERTICAL
CITY**
Ecovillage





**NOW OPEN
FOR SALE**

Sales Centre: Plot 3748, Aviation Village, Bill Clinton Drive,
Opposite the Presidential Wing, Nnamdi Azikiwe International Airport, Abuja.

(Monday to Saturday: 8am - 5pm)

E-mail: info@ecovillage.com.ng **Website:** www.ecovillage.com.ng

Tel: +234 (0) 80 8888 0818, +234 (0) 809 000 0451

DISCLAIMER: For detailed information on fixtures and fittings (e.g. kitchen, wardrobes, air conditioners, etc.), please speak to your Sales Rep. Please note that our computer generated images, elevation details and materials may vary from unit to unit and this information is subject to review and therefore potential changes. Computer generated images are indicative and for illustrative purposes only. Stated dimensions are subject to tolerance and are taken at floor level. You are therefore advised not to order any carpets, appliances, or other goods that depend on accurate dimensions before surveying your reserved unit by yourself. Kitchen layouts are indicative only and subject to change. Refer to your Sales Rep for details. Whilst extensive effort has been made to ensure the information on this insert is accurate, it is designed specifically as a guide. Prices and payment terms are subject to change. This does not constitute or form any part of a contract of sale.